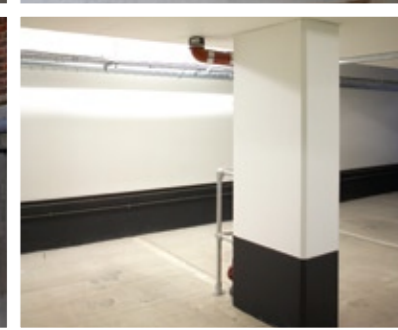
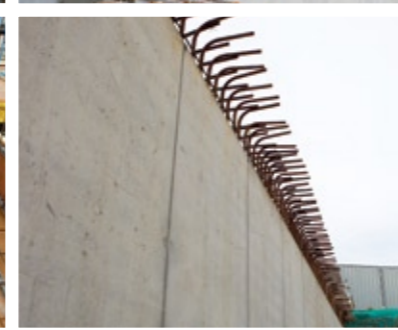
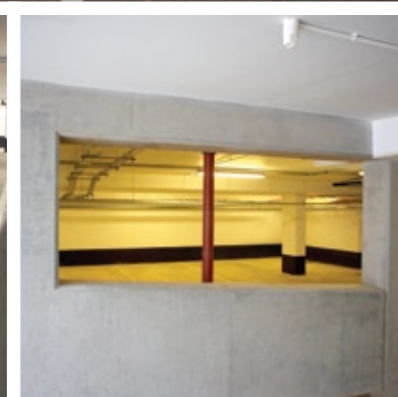
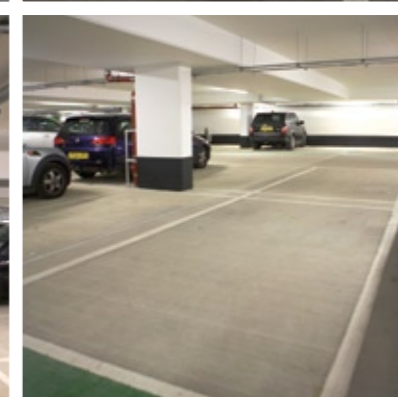
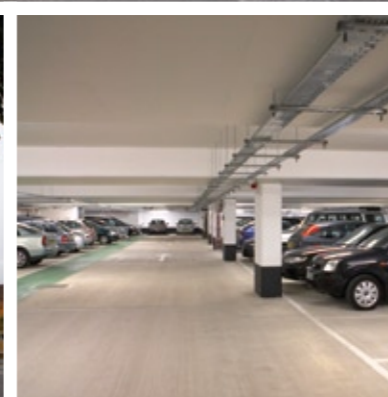
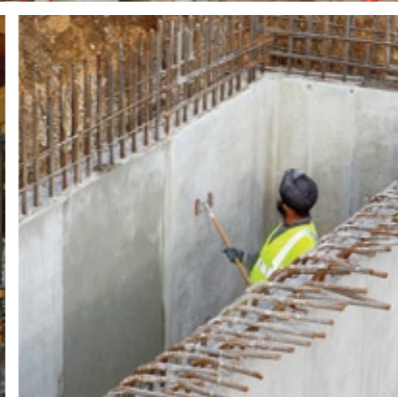
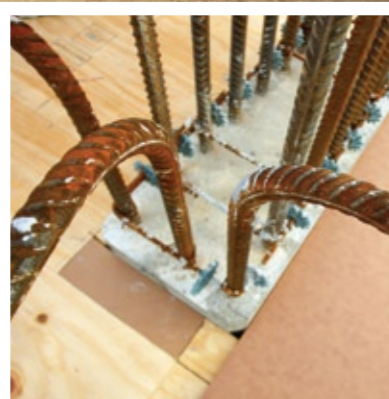
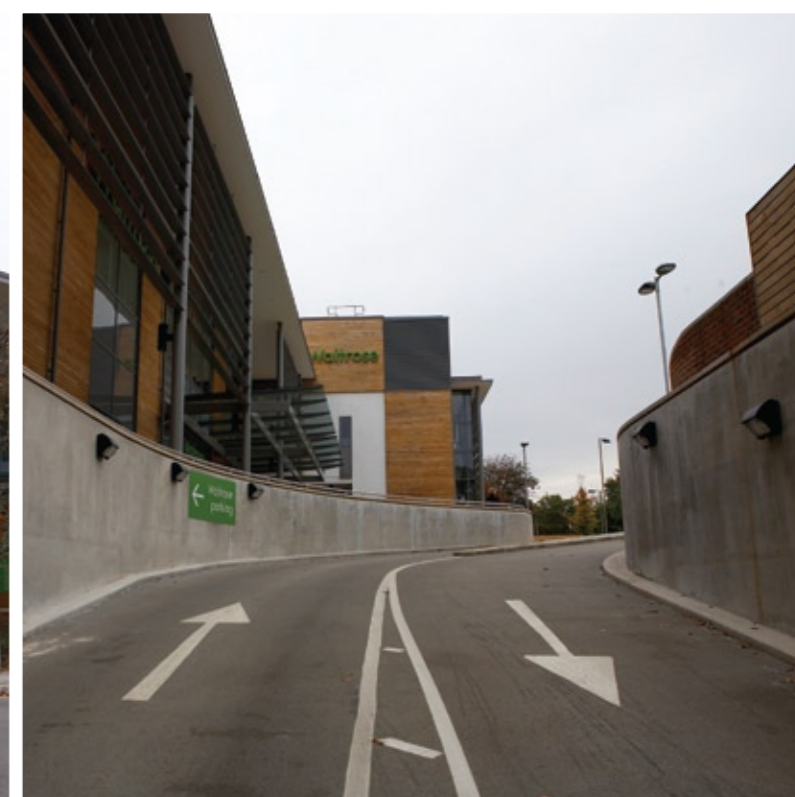
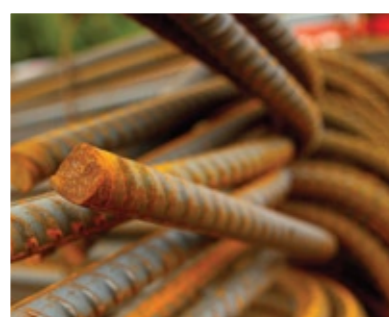




# Case Study: VINCI PLC

Waitrose, Weeke, Winchester





# VINCI PLC

## Blanchard Wells Contract

### Site.

New Waitrose Store, Weeke, Winchester, Hants

### Value.

£940K

### Contract.

Retail units and food store  
12,000 m<sup>3</sup> of muck disposal in less than 2 weeks  
1400 m<sup>3</sup> of concrete foundations  
½ mile of drainage  
Large basement excavation to form underground parking  
External footpaths and hard landscaping  
Section 278 works on busy B3049 Stockbridge Road

### What we did.

Worked closely with main contractor at pre-tender to value engineer and programme the project. In combining ground works and concrete frame we managed to reduce the anticipated build programme by 6 weeks to ensure our client won the project.

### Outstanding results.

In association with VINCI Construction site team we completed the contract and extra works within the contract period.

Interim and final measurements were progressed during the contact with the final account agreement achieved within one month of handover.

Blanchard Wells is a key Subcontractor for VINCI Construction.

### Blanchard Wells

The Meadows, Forester Road  
Soberton Heath, Southampton  
Hampshire S032 3QG

T. 01329 834304

F. 01329 834276

info@blanchardwells.co.uk

www.blanchardwells.co.uk

## Southern Concrete Contract

### Site.

New Waitrose Store, Weeke, Winchester, Hants

### Value.

£1,930,000

### Contract.

Retail units and food store  
2300 m<sup>3</sup> of concrete substructure works  
3600 m<sup>3</sup> of concrete superstructure works  
575 tonnes of reinforcement  
7000 m<sup>2</sup> soffit formwork  
3400 m<sup>2</sup> wall formwork  
800 m<sup>2</sup> column formwork  
Large underground car park with access ramp  
Lift shafts and post-tensioned suspended slabs

### What we did.

Used our experienced personnel to construct concrete basement and frame to client's high standard of finish. Final account agreed within 2 weeks of handover.

### Southern Concrete

The Meadows, Forester Road  
Soberton Heath, Southampton  
Hampshire S032 3QG

T. 01329 835354

F. 01329 830115

info@southern-concrete.co.uk

www.southern-concrete.co.uk

